

The Smart Community Management Manual

Chapter 18 - 1.4e) Addiction Supports



Email info@etownz.com for queries or visit us at www.etownz.ie

Introduction

eTownz has partnered with a number of highly respected research organisations in Ireland and the EU on research projects in the community development and health spaces over the past eight years. The Smart & Engaged Community Management framework was formed based on this research and the guidance of Dr. Maura Farrell of NUIG and Dr. Maura Adshead of UL.

The framework is designed so that it can be applied to any community and under any thematic area of community development. This manual is created using the dynamic “eTownz Knowledge Hub” database which is continually updated with new project ideas and other useful information. If you would like to contribute new ideas please contact us on info@etownz.com. This manual can be used as a standalone document or used along with eTownz Community Management Portal.

Who is involved and what is the structure?



Coordination Team

The Coordination Team facilitates coordination and knowledge sharing between different Town Teams. Highly committed Stakeholders experienced in community development are strongly encouraged to join the Coordination Team. Town Teams should retain independence and responsibility for their own areas.



Town Teams

Town Teams are inclusive smart local teams focused on specific aspects of local development. Town Teams link like minded people together to develop and implement solutions to community problems.



Stakeholders

A stakeholder can be a business, club, public service provider or interested local people. A stakeholder may represent one or more of these interests. All the stakeholders are invited to join a community council.

Core Town Teams x4

Members are invited to form Town Teams related to each of the four main community development Pillars. These are:



Every participating community should aim to have, at minimum 3 to 6 people on each of the four, top-level Town teams.

Town Teams

Specialist Town Teams are invited to form teams related to specific areas under the four main Pillars. Members of the council are invited to join the Town teams that are relevant to them.

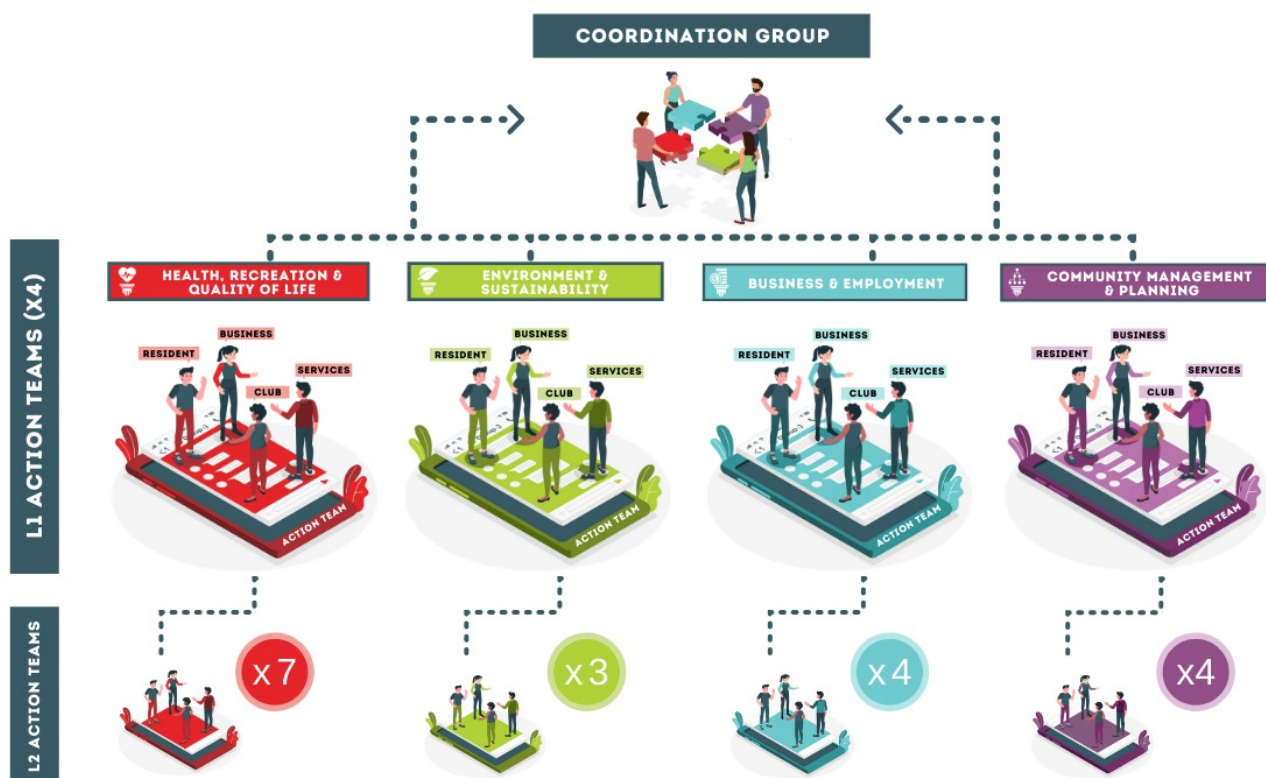
Members of the action team follow the structured format of the smart community framework. They decide their work schedule as a team, creating and implementing local action plans together.

How to use this manual to build a local action team?

The Coordination Team will introduce like-minded stakeholders who wish to form Town teams. The action team then follows a 5-step format illustrated below to compile a “Smart Community Action Plan” for their team. The then follows a 5-step format illustrated below to compile a “Smart Community Action Plan” for their team. The plans can be updated internally throughout the year.

Town teams are invited to submit their plan for the coming 12 months annually. This will be integrated into the overall community plan for the year, compiled before the community AGM.

The AGM helps align the various Town teams and encourage cross-community collaboration on implementation of the plan for the year.



Step 1: Stakeholder Review

The table below can be used by your team to help identify the stakeholders related to this theme. The stakeholders should be invited to provide their ideas, opinions and to join the local action team to help collaborate on initiatives.

Actions

- Manage a register of local assets
- Survey local opinions/ideas
- Recruit & engage local action team



Outcomes

- Top down understanding of local stakeholders
- Bottom up understanding stakeholder perspectives
- Expand team, increase ambitions, plan succession

	Title	Type	#	Comment
	Counselling & Mental Health (S502)	Business		
	Addiction Clinics (S2)	Public Service		
	County Concil (S72)	Public Service		
	Local Enterprise Office (S148)	Public Service		

Local TDs ([S151](#))Public
ServicePersons with: Addiction
Problems ([S835](#))

Individual

Step 2: Asset Review

Use the table below to help build the record list of assets in your area. Use the eTownz portal or a spreadsheet to register your local assets, discuss conditions and how the assets can be better utilised in the community.






	Title	#	Comments
	Community Health Scheme (A63)		
	Homeless Shelter (A116)		

Step 3: Goals & Metrics Review

Understanding the goal for each action team and attributing relevant metrics is a key part of the Smart Community Management Framework. Below we provide suggested goals and metrics. Please use these as a support to define goals and metrics that work for your community. In the plan, the action team should define how often the goals are to be reviewed and how often the metrics collected.



Title	How is this data collected	Comment	<input type="checkbox"/>
-------	----------------------------	---------	--------------------------

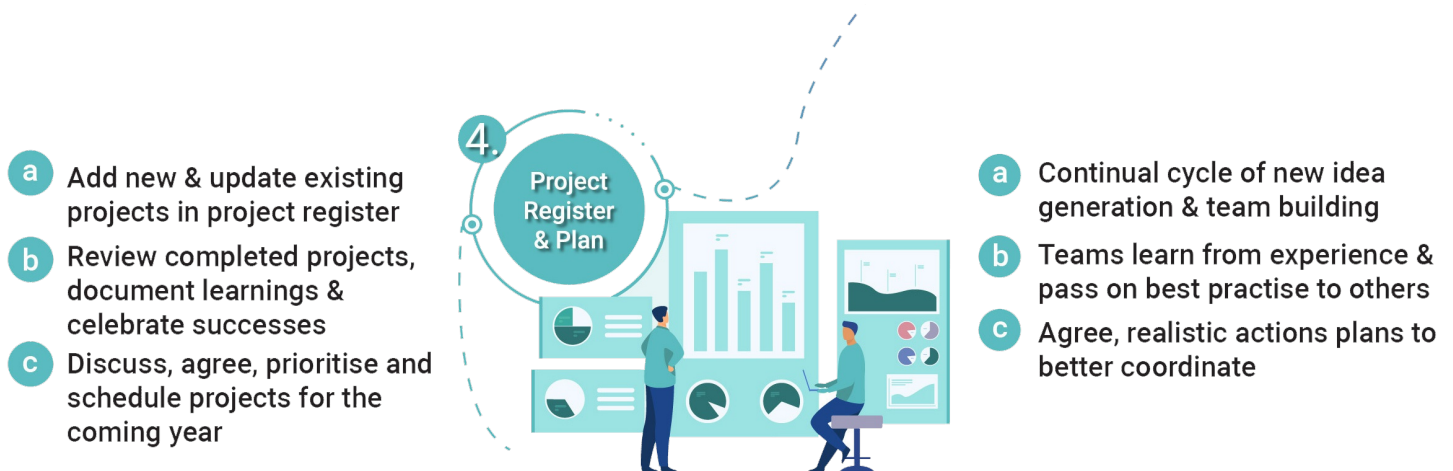
	Title	Summary	<input checked="" type="checkbox"/>	Comment
	Team Building, Management & Metrics - (G52)	Initiate & develop a local team who can coordinate activities related to this theme. Support the team in gaining a greater understanding of local challenges, opportunities and help them formulate a detailed and achievable micro plan for the future. The town team can be small or large and determine its own level of activity. The team may take on its own projects or simply meet occasionally to help coordinate activity among related groups. The team can be comprised of local residents, businesses, club or public service representatives. The team structure can be simple to start with and can decide how often they should meet (e.g. weekly/monthly/quarterly) as they see fit. The team should focus initially on improving the overall understanding of where the challenges and opportunities lie and then help coordinate activities and related projects. There is also a wide variety of supports available and the team can help ensure the community can take advantage of these supports when they become available.	<input type="checkbox"/>	
	Awareness, Understanding & Skills - (G53)		<input type="checkbox"/>	
	Preserve, Support & Develop - (G54)	Beyond the serious health consequences, the harmful use of alcohol brings significant social and economic losses to individuals and society. It is crucial that communities work together to identify such issues in their community and devise strategies that they can implement to cater for the needs of individuals who undertake alcohol abuse and their families. ***** Develop Supports for Drug Addiction Develop supports for those susceptible to drug misuse To reduce the level of drug misuse in communities it is important to increase peoples awareness and knowledge on the topic. In addition to this, it is important that communities are able to support drug addicts and their families with the necessary support structures	<input type="checkbox"/>	

and services. **** Develop Supports for Gambling Addiction Provide services and information on gambling addictions Raise awareness, educate and provide support services within communities to people with gambling addictions

***** Identify Local Addiction Problems Devise a plan to help people in the community who are suffering from an addiction Addiction comes in many forms including (but not limited to) alcohol, drug and gambling addiction. Working with relevant local organisations and public organisations, gain understanding of help implement measure to prevent, manage and address local addiction issues.

Step 4: Project Register & Planning

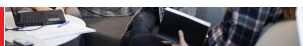
The action team should begin this section by taking consideration of the projects undertaken in the past 2 years, the currently active projects as well as project ideas for the future. Use the eTownz portal to conduct an online discussion on this topic. We also provide a suggested format for huddles related to this.



Goal: Team Building, Management & Metrics - (G52)

Initiate & develop a local team who can coordinate activities related to this theme. Support the team in gaining a greater understanding of local challenges, opportunities and help them formulate a detailed and achievable micro plan for the future. The town team can be small or large and determine its own level of activity. The team may take on its own projects or simply meet occasionally to help coordinate activity among related groups. The team can be comprised of local





residents, businesses, club or public service representatives. The team structure can be simple to start with and can decide how often they should meet (e.g. weekly/monthly/quarterly) as they see fit. The team should focus initially on improving the overall understanding of where the challenges and opportunities lie and then help coordinate activities and related projects. There is also a wide variety of supports available and the team can help ensure the community can take advantage of these supports when they become available.



Goal: Awareness, Understanding & Skills - (G53)

Related Project Ideas	Rate	Comments
<p>Prevention Programs (P328): Community initiatives conducting education and raising awareness can help address stigma. Community-level programs greatly increase the likelihood people will seek help because these programs target multiple audiences and make changes in community norms and perceptions, delivery systems, and organizations.</p> <p>(Case Study: 4) Strategies for communities to implement</p>		
<p>Hold Local Alcohol Awareness Day (P483): Organise an alcohol awareness day where various sections of the community can be engaged in the problems of alcoholism and can access advice and support.</p> <p>(Case Study: 251) Inchicore/ Bluebell: Alcohol Awareness Day 2015</p>		

Goal: Preserve, Support & Develop - (G54)

Beyond the serious health consequences, the harmful use of alcohol brings significant social and economic losses to individuals and society. It is crucial that communities work together to identify such issues in their community and devise strategies that they can implement to cater for the needs of individuals who undertake alcohol abuse and their families. ***** Develop Supports for Drug

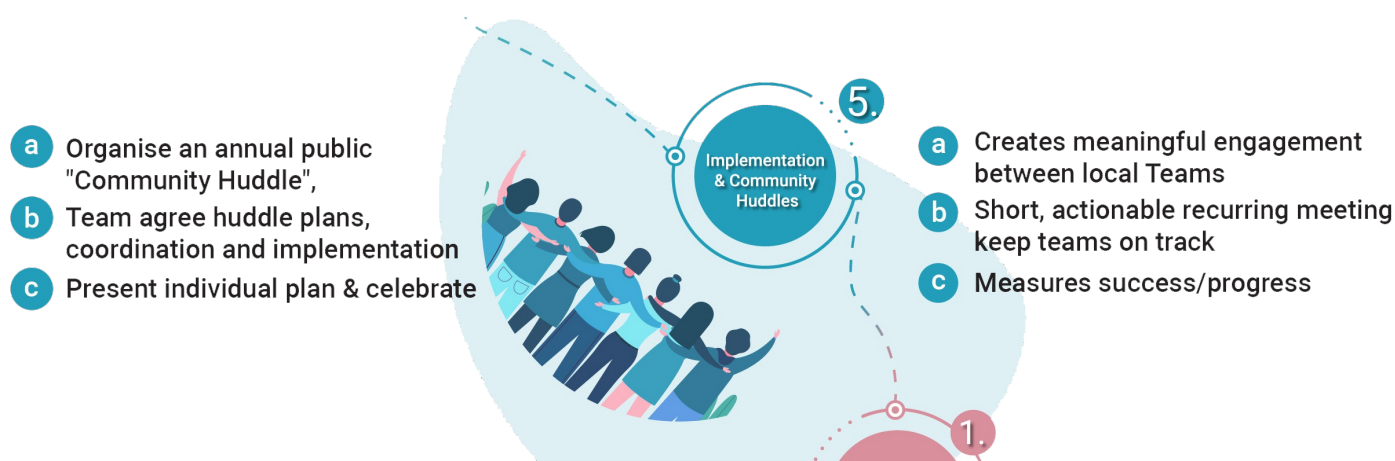
Addiction Develop supports for those susceptible to drug misuse To reduce the level of drug misuse in communities it is important to increase peoples awareness and knowledge on the topic. In addition to this, it is important that communities are able to support drug addicts and their families with the necessary support structures and services. **** Develop Supports for Gambling Addiction Provide services and information on gambling addictions Raise awareness, educate and provide support services within communities to people with gambling addictions ***** Identify Local Addiction Problems Devise a plan to help people in the community who are suffering from an addiction Addiction comes in many forms including (but not limited to) alcohol, drug and gambling addiction. Working with relevant local organisations and public organisations, gain understanding of help implement measure to prevent, manage and address local addiction issues.

Related Project Ideas	Rate	Comments
Research Local Addiction Levels (P161): Working in a tactful manner, and in collaboration with state organisation, try to gain an understanding of addiction issue (if any) in your community. By understanding the extent and nuance of the problem in your community the community will be in a better position to address the local problems		
Raise Local Awareness Of Addiction (P162): Addiction affects people from all backgrounds, by supporting awareness campaigns in the community, people in the area will be better equipped to help identify and address addiction problems they may have or people around them maybe experiencing. It is extremely important to undertake such awareness campaigns in conjunction with the relevant / experienced support organisation or professional		
Change Community Attitude Addiction (P327): Communities can come together to encourage a negative attitude towards drug abuse.		
Provide Community Rehabilitation Services (P331): Develop and deliver appropriate and relevant rehabilitation services for drug users in their communities by: Providing supports and services to people who are in treatment to enhance the effectiveness of treatment Working with people in identifying their progression needs in relation to personal supports, family support, education and training etc. Facilitating access for people to whatever options are required in integrating them back into normal community life (Case Study: 3) Drug Rehab Projects		
Startup Peer Support Group (P776): Startup an abstinence day programme for those in recovery from drug addiction. A key part of such recovery program is finding a sponsor, a former		



gambler who has experience remaining free from addiction and can provide you invaluable guidance and support.

Step 5: Community Huddles & Implementation

Community Huddles cover a variety of different meetings types that take place throughout the year. This includes remote meetings, project planning or project implementation meetings. We provide a suggested one hour format for the main meeting types to help make best use of people's time.



Relevant/Supporting Organisations

Title		Comment	
	Aftercare Recovery Group (ACRG) Click here ACRG is a drug-free structured day programme providing a respectful and supportive environment to those recovering from drug and alcohol addiction		
	Ana Liffey Project Click here Provides counselling, support and other services, based on a harm reduction approach, for drug users in the community and in prison, and for their families		